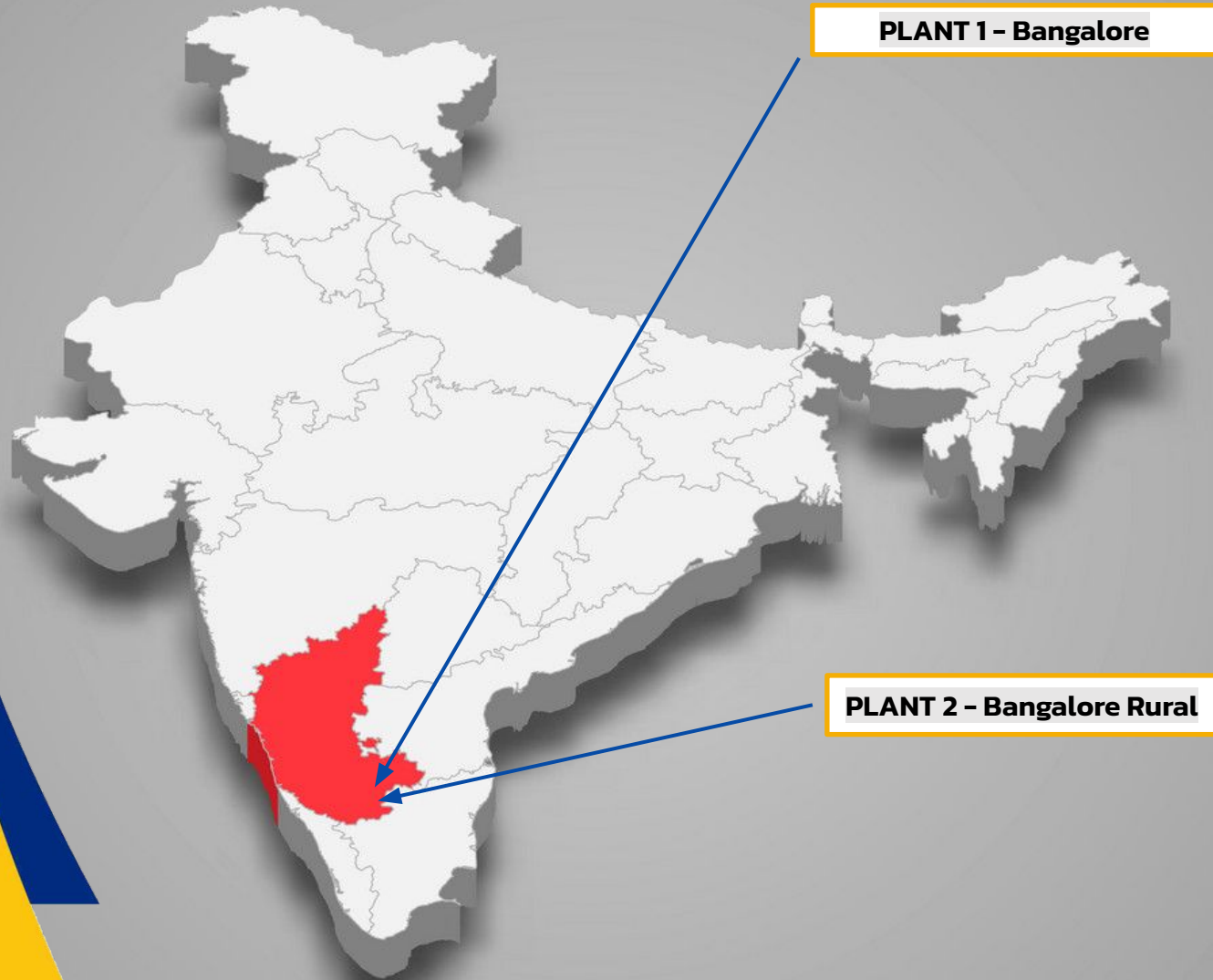


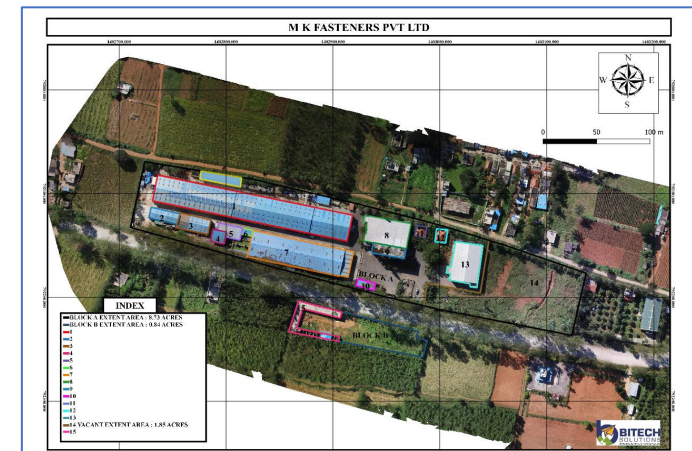
**MKFasteners**



**Greetings  
from MK  
Fasteners**



**Bommasandra Industrial Area Spread Over 1.2 Acres - Production facilities of 108,000 square feet**

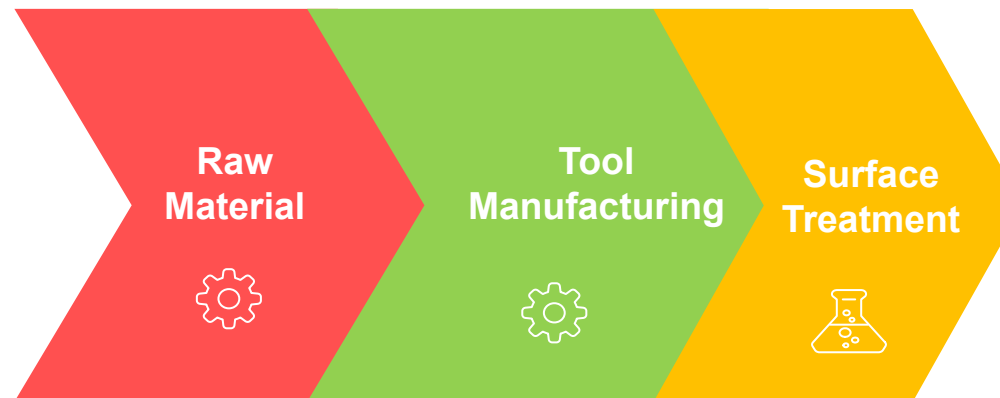


**Vanakanahally Village Spread Over 12 Acres - Production Facilities of over 320,000 square feet**

## In-House Production Processes



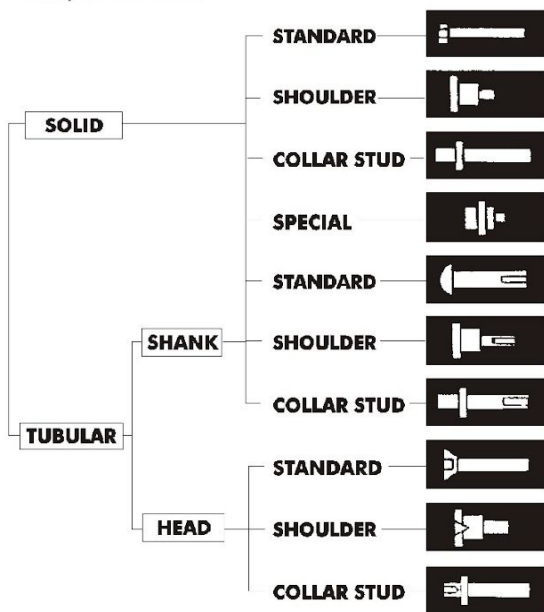
## Outsourced Sourcing & Production Processes



# Production Examples & Types



Shapes & Profiles



- Captive Designed RM Coil Stacked Storage
- 750 Metric Tons Total Storage Capacity
- FIFO, Grade-wise Color Coding & Coil QR Coding & Tagging
- Dedicated RM Test Facility with UTM and Spectrometer

## OUR EXISTING RM VENDOR MILLS

**POSCO (Korea)**

**NIPPON STEEL (Japan)**

**CHINA STEEL CORP (Taiwan)**

**JSW (India)**

**MUKUND (India)**

**JSPL (India)**

**TATA SPONGE (USHA MARTIN) (India)**

**JAYASWAL NECO (India)**



## **Automatic Continuous Mesh Belt Furnace SCADA Controlled.**

- Through Hardening
- Case Carburising
- Carbonitriding

**Installed Capacity - 1000 kgs per hour**

**Online De-Phosphating & Complete SCADA Control**



**Automatic Barrel Type Surface Treatment Line with Complete SCADA Control**

**Installed Capacity : 850 -1000 kgs per hour**

**Offline Hydrogen De-Embrittlement Oven with Complete SCADA Control**

## **INHOUSE PROCESSES**

**Zn Ni Black/Silver**

**Zn Cr3 Yellow**

**Zn Cr3 Silver/Blue**

**Zn Cr3 Black**

**Zn Cr3 Iridescent**

## **OUTSOURCED PROCESSES**

**Zn Ni Matt**

**Zn Al / Zn Flake**

**Geomet / Dacromet,**

**Dorken / Magni**

**Phosphating / Black Oxide**



**ROCKWELL  
HARDNESS  
TESTING**



**SURFACE ROUGHNESS TESTING**



**PROFILE  
PROJECTOR**

**2D OPTICAL INSPECTION**





## METALLURGICAL TEST INSTRUMENTS



Micro Vickers Hardness Tester



Digital Rockwell Hardness Tester



Rockwell Hardness Tester



Digital Microscope



Mould Making Facility



Stereo Zoom Digital Microscope



Universal Testing Machine



Optical Emission Spectrometer

## PLATING TEST INSTRUMENTS



Chemical Analysis Lab



XRF Plating Thickness Detector



Cyclical Corrosion Test Chamber



**AUTO  
OPTICAL  
SORTING  
MACHINES**



**AUTO EDDY CURRENT  
SORTING**

**2D OPTICAL INSPECTION**



**BOLT TORQUE  
TENSION TESTING  
MACHINE**



**OES SPECTROMETER**

CATEGORY	FUNCTION	NUMBER OF EMPLOYEES
<b>STAFF</b>	TOP MANAGEMENT	4
	NEW PRODUCT DEVELOPMENT	23
	QUALITY ASSURANCE	24
	MARKETING & SALES	9
	PRODUCTION	20
	STORES & LOGISTICS	19
	FINANCE	7
	PURCHASE & ADMIN	12
<b>OPERATIONS &amp; MANUFACTURING</b>	FOREMAN & LINE LEADERS	14
	OPERATORS	74
	ASSISTANT OPERATORS	189
	CONTRACTORS & HELPERS	
<b>TOTAL</b>		<b>395</b>

## Business Distribution as per Industry Segment (%)

**Others**

0.5%

**Commercial Vehicles**

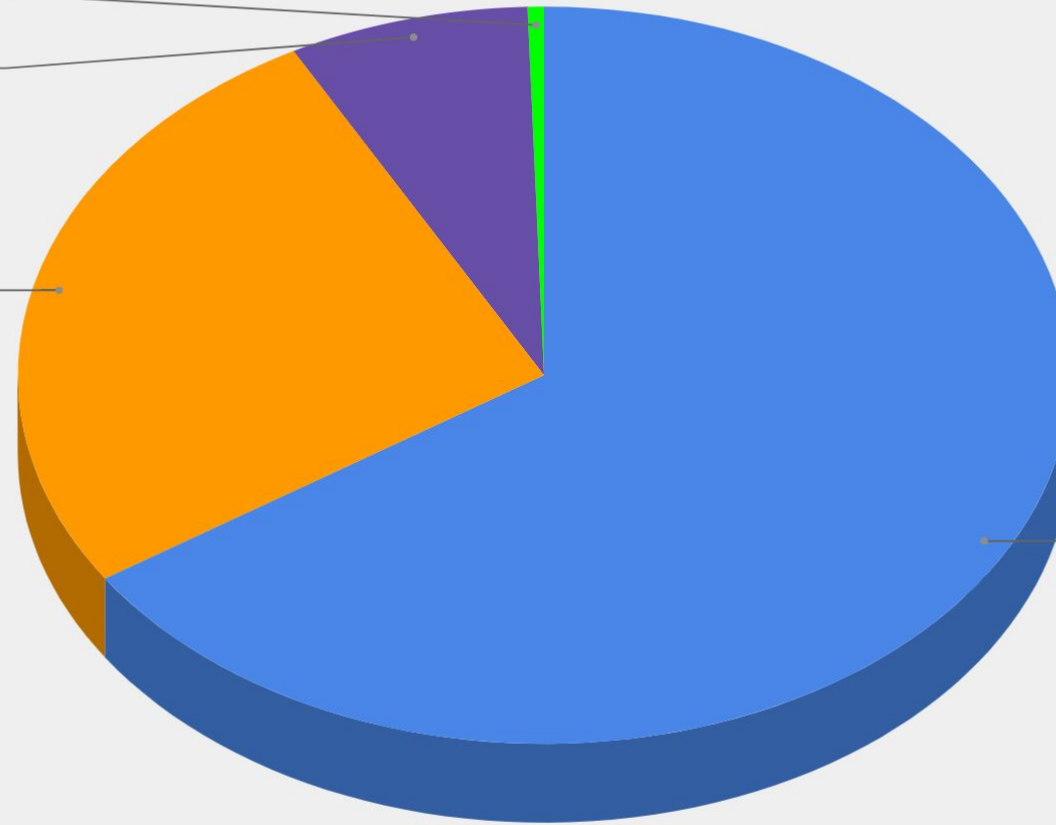
7.4%

**Two-Wheelers**

26.4%

**Passenger Cars**

65.7%



<b>INTERNAL DEPLOYMENT</b>	<b>CUSTOMER SPECIFIC APPROVAL</b>
<b>IATF 16949:2016</b>	<b>SQ MARK HMI</b>
<b>ISO 14001:2015</b>	<b>MSIL TIER-II VSA &amp; SOR</b>
<b>TPM</b>	<b>BOSCH VDA 6.3</b>
<b>PLANNED FOR 2024</b>	<b>ISO 45001:2018</b>
	<b>AS9100D</b>

## *Excellence through Teamwork is our Motto!*

### Multi National Machineries

Wide range of reputed brands of machineries with diversified manufacturing scope



### Design Facilities

Simulation, Design done at In-House with Utilization of Cold Forming Simulation Software for High Accuracy and Precision Cold Forming



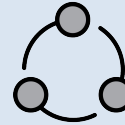
### Reputed Suppliers

Partnerships with reputed companies for critical inputs such as tool manufacturing, advanced tool development & RM



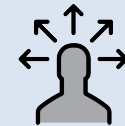
### Digitally Potential

Utilization of latest Technologies like G-Suite, Cisco ERP, CPM Easy Form and AutoDesk.



### Skilled Workforce

Experience and expertise of over 60 years in the field of Cold Forging



### Proactive Management

Flexibility to invest on infrastructure, machineries, equipment and tooling to meet customer specific requirements



# Examples of our Products

**MKFasteners**



# Some More Examples

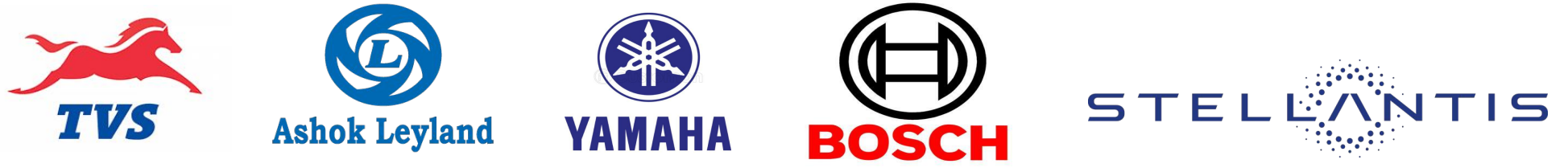




# Some More Examples



**Automotive OEM Customers (Tier 1)**



**Automotive OEM Customers (Tier 2)**



TIER-1 Automotive Customers



*Thank You*

